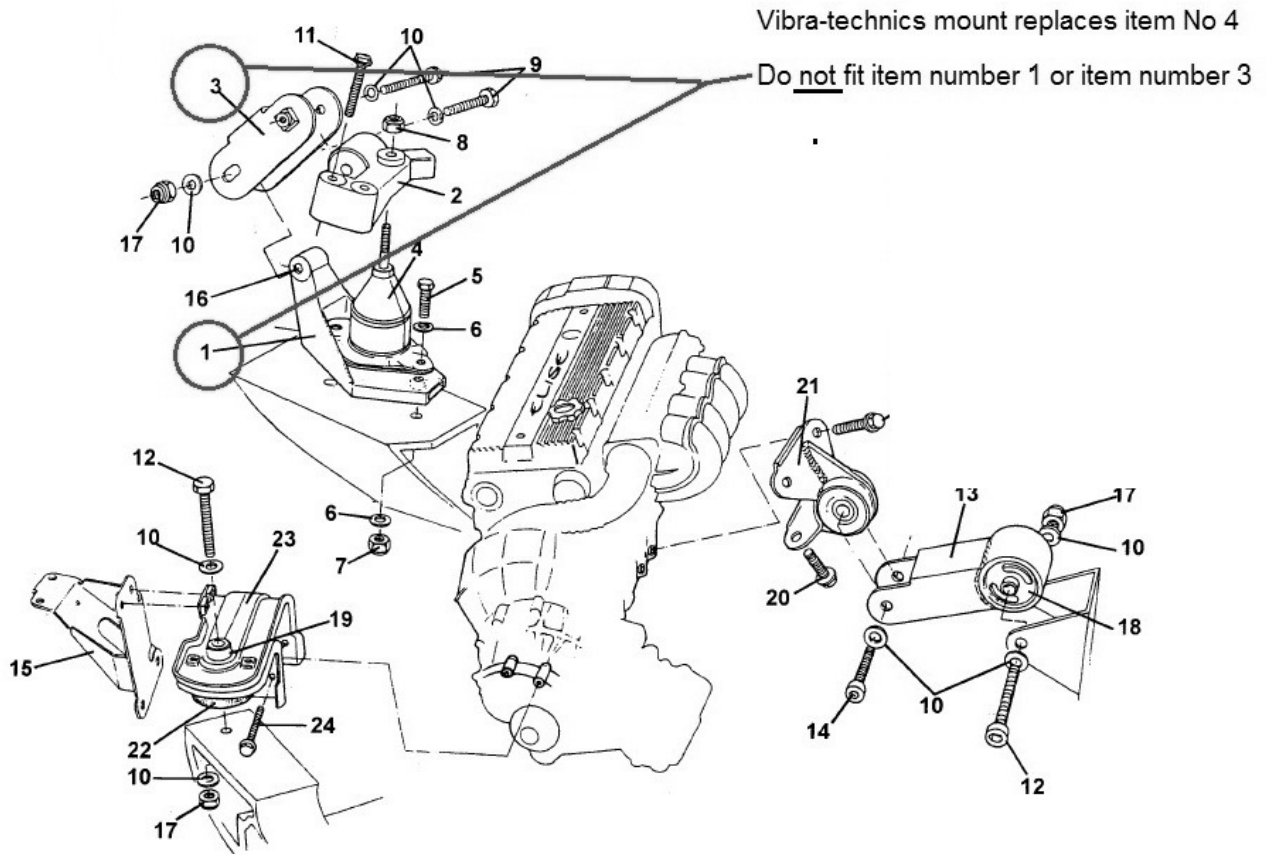


The Vibra-Technics right hand (engine side) mounts replaces the hydraulic engine mount but retains some of the original parts of the assembly. The main change is that the metal bracket that fits between the mount and the chassis is discarded. The parts that are used are shown below:-



The before and after assembly should look like this:-



The Vibra-Technics left hand (transmission) mount is an assembly as shown below:-

- 1) Fit the mount to the bracket using the spacer and button headed screws. Torque the screws to 50Nm. Make sure the mount is fitted the right way up as shown in the picture below.
- 2) Place the rubber faced washer on top of the assembly with the rubber side facing down and locate by inserting the M12 bolt through the middle.
- 3) Place the large steel washer on the chassis and line up the centre holes. Lower the gearbox onto the washer using the centre bolt as a location.
- 4) Fit the nyloc nut and small washer to the M12 bolt and torque to 90Nm.

Gearbox mount fitting detail

